

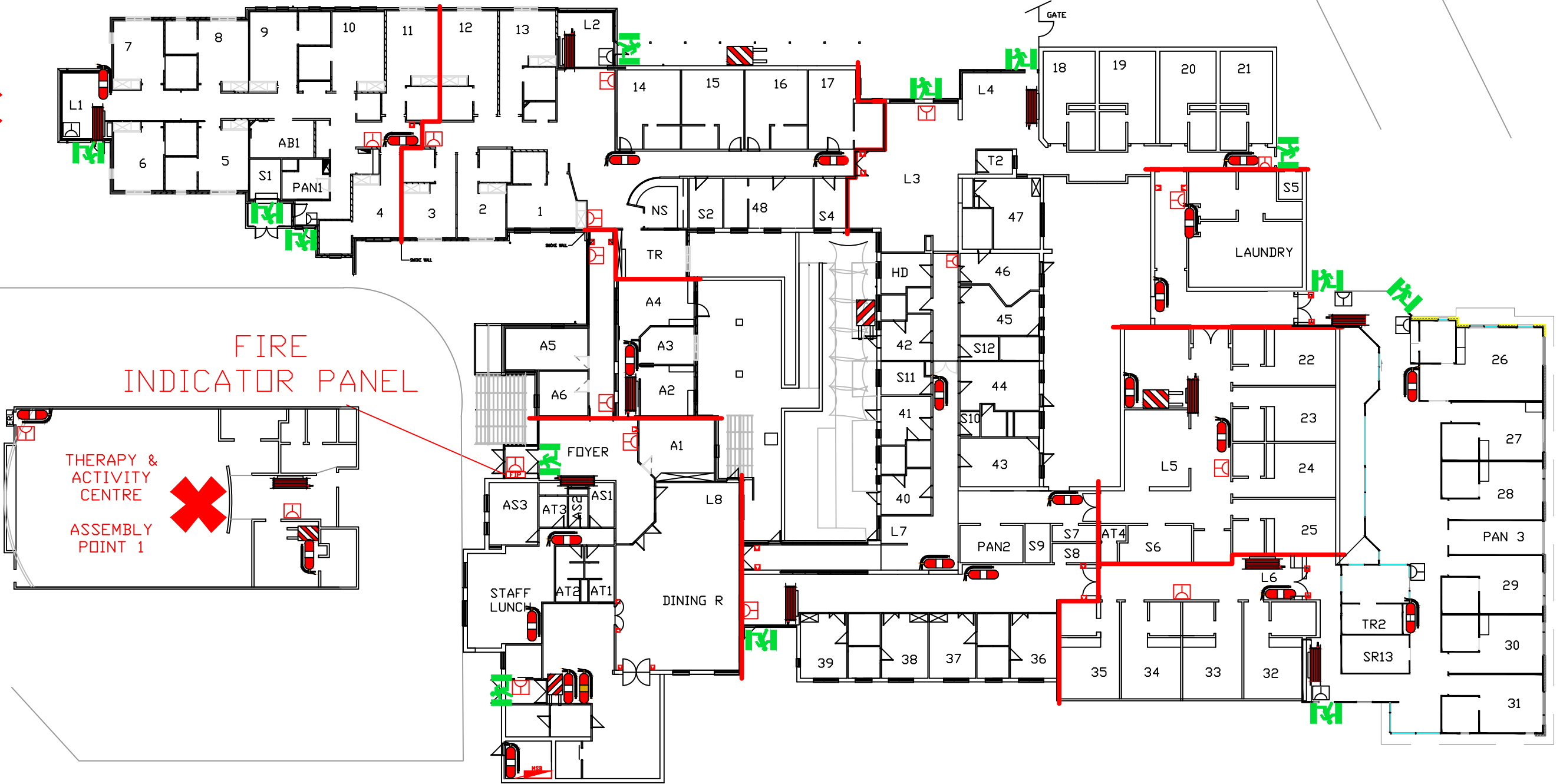
STEPHEN STREET

ASSEMBLY POINT 3

EMERGENCY PLAN



ASSEMBLY POINT 2



FIRE INDICATOR PANEL

THERAPY & ACTIVITY CENTRE

ASSEMBLY POINT 1



LEGEND

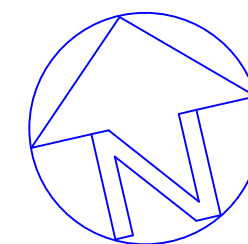
- FIRE EXTINGUISHER WET CHEMICAL
- FIRE EXTINGUISHER DRY CHEMICAL
- FIRE BLANKET
- FIRE/SMOKE WALL
- FIRE INDICATOR PANEL
- HOSE REEL
- FIRE ALARM BREAK GLASS
- DOOR RELEASE BREAK GLASS
- EXIT SIGN
- ELECTRICAL SWITCH BOARD

VIGIL

FIRE AND SECURITY

PH: 0400 096 651
 FAX: 03 6427 3838
 E-mail: shane@vigil-fs.com.au

MELALEUCA - HOME FOR THE AGED
 73 MARY STREET - EAST DEVONPORT



UPDATED
 JUNE-19
 RSE-TE/AM